



# Berkey®

WATER SYSTEMS

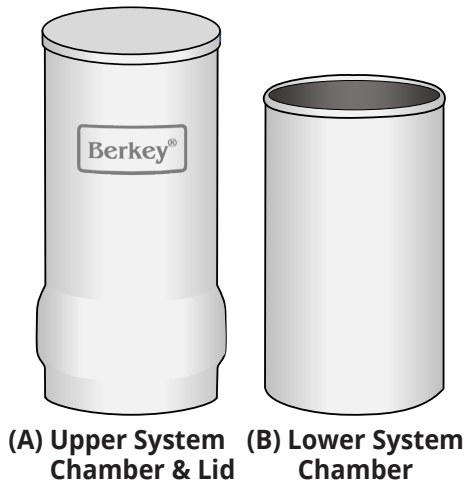
## Instructions for Go Berkey® Kit



### Included With Your Go Berkey® Kit

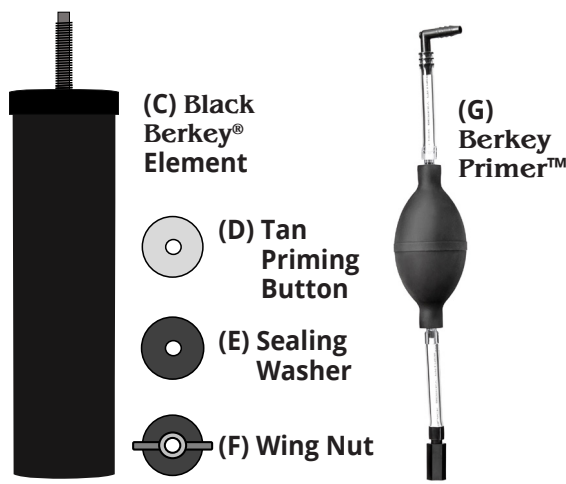
Parts shown for illustration only and are not to scale.

#### Go Berkey® System



(A) Upper System Chamber & Lid (B) Lower System Chamber

#### Filter Element, Parts and Primer



(C) Black Berkey® Element

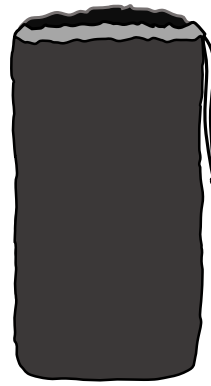
(D) Tan Priming Button

(E) Sealing Washer

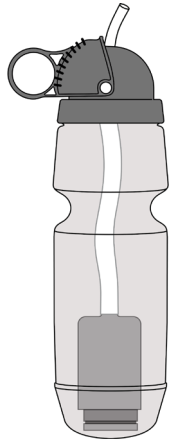
(F) Wing Nut

(G) Berkey Primer™

#### System Carry Case



#### Sport Berkey® Water Filter Bottle



Failure to read, thoroughly understand, and follow all instructions may result in injury, water damage, or voiding of the warranty! It is the assembler's responsibility to make sure all components are properly assembled and installed using the instructions provided. While your **Berkey®** System should not have any leaking problems, there is always the chance that a leak might occur due to being improperly assembled or perhaps a faulty part. In an overabundance of caution, we recommend that for the first 24 hours the filled system be placed in an area wherein if such a leak were to occur, the resulting spillage would not damage anything.

**Note:** This system is **not** compatible with Berkey PF-2™ Fluoride and Arsenic Reduction Elements.

## Go Berkey® Stainless Steel System Assembly

We recommend setting up your system on a countertop or other waterproof surface.

- Wash your hands and stainless steel chambers before assembly to reduce the chances of contaminating the system's components.
- Be sure to keep all parts and original packaging in the unlikely event that your system needs to be returned to the manufacturer.

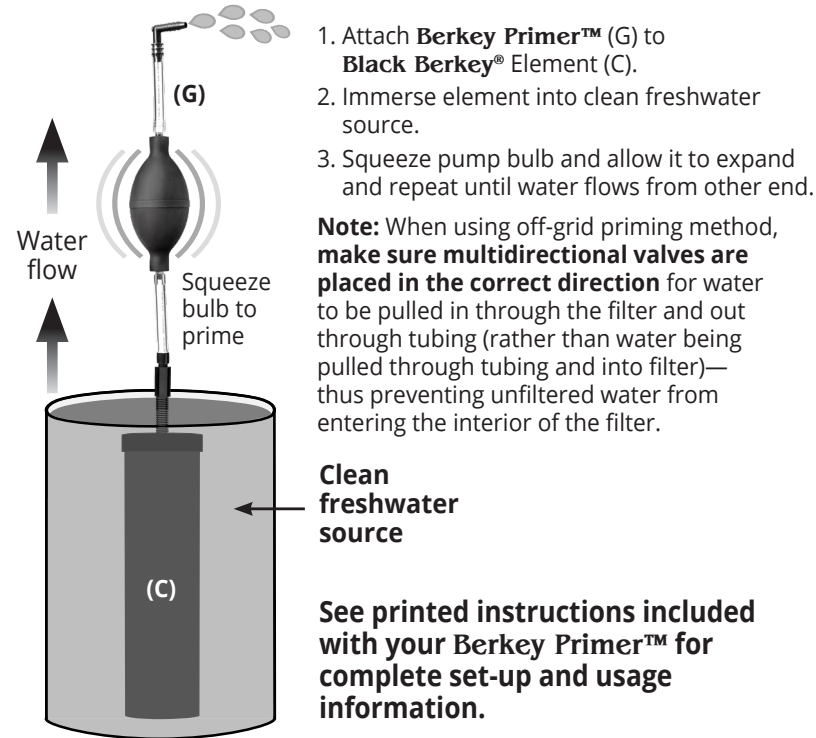
### 1. Prime the Black Berkey® Element

Priming uses water to displace air out of the element's pores, ensuring that water can flow freely. **Element will not operate properly if it is not primed.**

We recommend setting up your system on a countertop or other waterproof surface. If process dust is present, wipe it off with a Scotch-Brite® pad under cold running water.

#### Priming Method 1 (Preferred): Off-Grid Priming Method Using Berkey Primer™

The **Berkey Primer™** is a handheld priming pump that makes the element easy to prime without the need for faucets or hose connections.



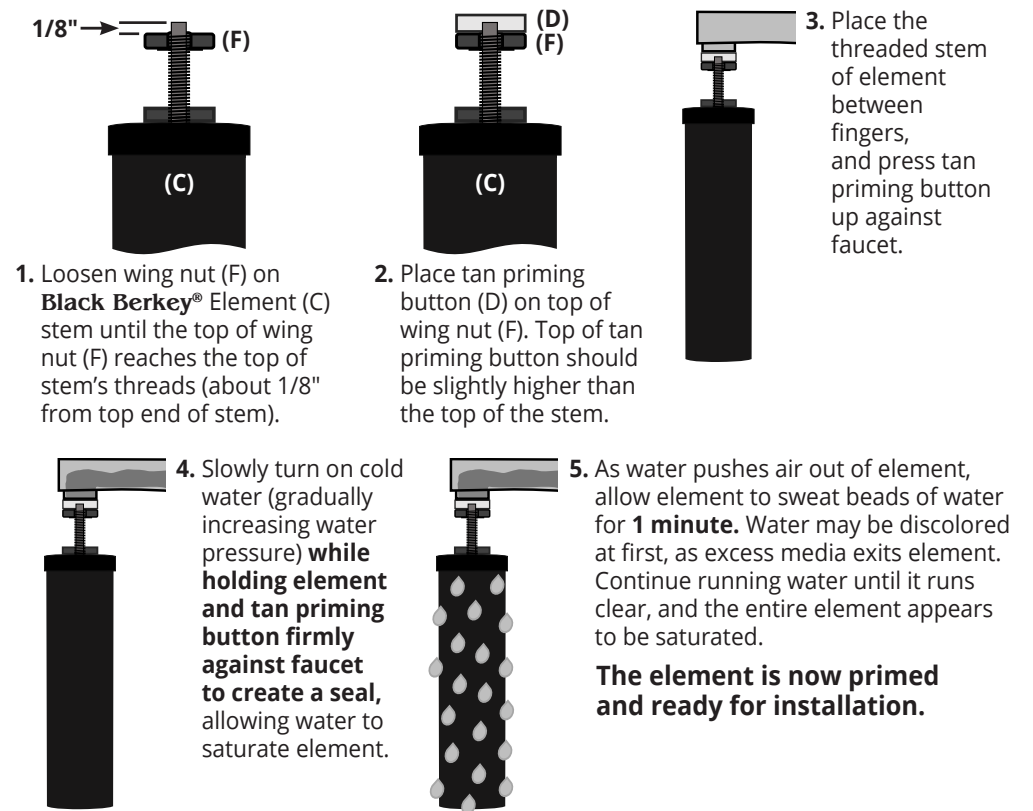
1. Attach **Berkey Primer™** (G) to **Black Berkey®** Element (C).
2. Immerse element into clean freshwater source.
3. Squeeze pump bulb and allow it to expand and repeat until water flows from other end.

**Note:** When using off-grid priming method, make sure multidirectional valves are placed in the correct direction for water to be pulled in through the filter and out through tubing (rather than water being pulled through tubing and into filter)—thus preventing unfiltered water from entering the interior of the filter.

Clean freshwater source

See printed instructions included with your Berkey Primer™ for complete set-up and usage information.

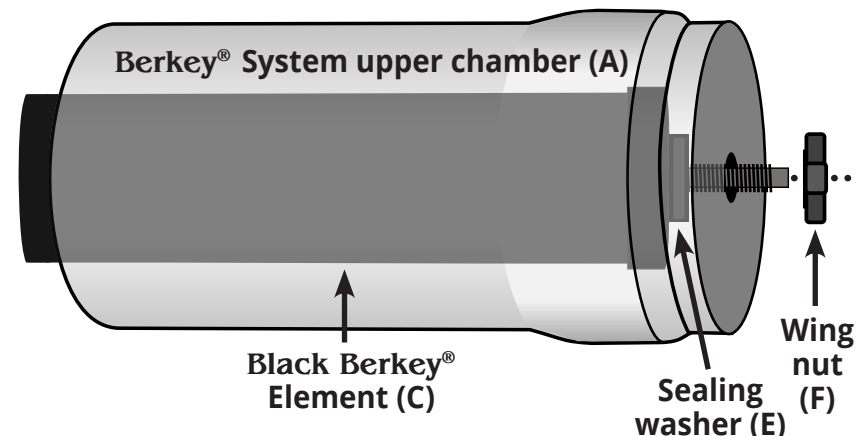
#### Priming Method 2: Using a Standard Tap Water Faucet



**Tip:** Your **Black Berkey®** Element will be wet after priming it—we recommend placing your element in a clean bowl or sink while cleaning or maintaining your system.

**Black Berkey®** Elements may also be primed using a bottle of filtered water. Have one person hold the element, with the priming button attached and facing upward. Have a second person press the mouth of the bottled water against the priming button and squeeze until water is forced through entire exterior wall of element and it begins to sweat beads of water.

### 2. Install Primed Black Berkey® Element Into the Go Berkey® Stainless Steel System



1. Remove wing nut from threaded stem while leaving sealing washer on **Black Berkey®** Element.
2. Place threaded stem, with sealing washer attached, into the hole in the interior base of upper chamber.
3. Secure element in the base of the chamber by screwing wing nut onto threaded mount until hand-tight. **Caution: hand tighten only. Over-tightening wing nut can strip the nut's threads, which could cause the system to leak.**
4. With element in place, carefully place upper chamber onto lower chamber. Your system is now assembled and ready to use.

### Questions About Using or Assembling Your Berkey® System?

Phone: (888) 803-4438 Monday - Friday 9AM - 5PM CST Holiday hours may vary.

# Using Your Go Berkey® System

**Use of softened water or salt water can clog the filter's pores and will void your warranty.**

Avoid placing your system in direct sunlight or near a heat source such as a stove, indoor heater, etc.

**Note: This system is not compatible with Berkey PF-2™ Fluoride and Arsenic Reduction Elements.**

1. Fill upper chamber with cold or room temperature water. **DO NOT use hot or boiling water.**
2. Place lid on system. Allow water to filter into lower chamber and discard water. If water is slightly discolored due to any remaining particulate, do not be concerned—prime and reinstall element as many times as needed until dispensed water is clear.
3. Your system is now ready to use. Refill upper chamber with water.

## Assembly Verification\* (Red Food Coloring Test)

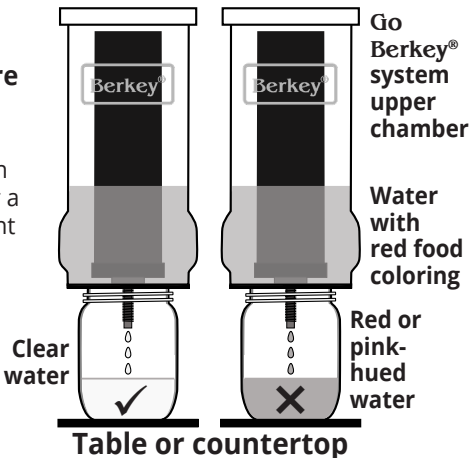
This simple test verifies that your system has been assembled correctly, and that there are no internal leaks in your system. We recommend this test be done after the first assembly of this system, after removal or replacement of a **Black Berkey®** Element, or the first use after drying and storing an element for an extended period of time.

1. Place the upper system chamber only (with **Black Berkey®** Element installed) on top of lower chamber (when on the go) or a cup or a jar, positioned so that the element can drip water down into it.
2. Fill upper chamber with water. Add several drops (enough to give the water a red hue) of artificial **red** food coloring (must be red) to upper chamber. We recommend using Berkey® red food coloring (included with the Berkey® Filter Priming Kit, sold separately) or McCormick's red food coloring or any artificial food coloring. Acceptable red food coloring ingredients include water, propylene glycol, FD&C Red 40 and FD&C Red 3, and propylparaben. **Avoid using food coloring that is not red, or contains citric acid, sodium benzoate or natural ingredients such beet juice, turmeric, etc. Using organic food colorings will result in a false failed test (stating that your system is not sealed correctly).**
3. Check color of filtered water that has dripped into the lower chamber, cup or jar. If there is no red or pink hue, this indicates that the element is sealed, and system has been assembled correctly.

**\*Note: This test is meant to confirm that the system was assembled as intended.**

**If water drained from system has a red or pink hue during the assembly verification test, repeat the procedure again in this manner:**

1. Place the upper system chamber only (with **Black Berkey®** Element installed) on top of lower chamber (when on the go) or a cup or a jar, positioned so that the element can drip water down into it.
2. Fill upper chamber with water and red food coloring as directed above.
3. Allow system to filter water. Check the color of water expelled from element. If water color is clear, your system is ready to use. If red dye is still present, reinstall the element and re-run test.
4. If system continues to fail the test, contact our Customer Service department for assistance.



## Precautions

- **Avoid placing your system in direct sunlight or near a heat source such as a stove, indoor heater, etc.** Excessive heat can create conditions that facilitate microbiological growth inside the upper chamber.
- **When lower chamber is partially filled, be cautious not to overfill upper chamber**, as this could cause lower chamber to overflow.  
*For example: if the lower chamber is 1/3 full, the upper chamber can be refilled by 2/3. If the lower chamber is 1/2 full, the upper chamber can be refilled by 1/2, etc.*
- **Never allow a wet Black Berkey® Element to freeze**—exposure to freezing temperatures can expand the water into ice, which may damage the element and cause it to crack or break. Allowing element to freeze will void your warranty.

## Maintaining Your System

**We recommend performing maintenance every 30 days of continual use, or periodically as needed.**

### Clean the lower chamber

1. Remove upper chamber, making sure to drain any water in chamber.
2. With the **Black Berkey®** Element remaining installed in the upper chamber, place upper chamber upside down or securely on its side to ensure it will not roll off of your counter or other work surface. **Caution: breaking an element's stem will void its warranty.**
3. Clean lower chamber with mild dish soap or a 1:1 mixture of water and vinegar, and rinse thoroughly.
4. With **Black Berkey®** Element in place, carefully place upper chamber onto lower chamber.

## Black Berkey® Element Storage

**If you are going to be leaving the system unattended for 4-15 days and want to reduce the necessity of re-priming the element**, remove the element from your system and place it in a sealable plastic bag (gallon-size or larger) while element is still damp (this allows the element to stay wet, making priming unnecessary). Then, place the element in your refrigerator where it will not freeze. When ready, thoroughly rinse element under cold water, then reinstall it in your system.

**For longer-term storage, we recommend completely drying the element first.**

Ensure it is bone-dry (zero moisture) before storing them long-term. Shake excess water from element, then air-dry by leaving element on a windowsill or other sunny location for 1-3 days until completely dry.

Once element is bone-dry (zero moisture), store it in a sealable plastic bag (gallon-size or larger)—this prevents element from absorbing odors. When you are ready to re-use your element, clean it by scrubbing the outside with a stiff brush or a Scotch-Brite® pad under cold running water. Then re-prime the element before putting it back in your system.

Alternatively, you can use a **Berkey Primer™** (included with this system) which assists in both priming and purging. Purging speeds up the drying process by pushing water out of the element before you place it in the sun or air dry to complete the process.

Note: when purging, valves on the **Berkey Primer™** must be reversed.

## System Troubleshooting

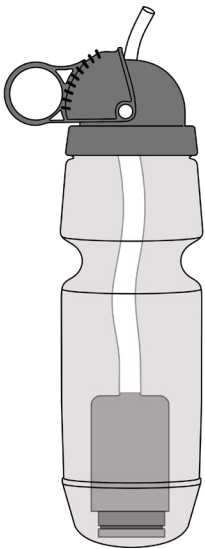
**After prolonged use, flow rate may decrease significantly. To improve flow rate:**

1. Carefully remove **Black Berkey®** Element from the upper chamber and gently scrub it with a stiff brush or Scotch-Brite® pad under cold running water (never apply soap or other cleaning agents to your **Black Berkey®** Element). Re-prime element and reinstall it inside the upper chamber.
2. Place upper chamber back onto lower chamber, then perform the Assembly Verification process (Red Food Coloring Test). Your system is ready to use.

## Using Your Sport Berkey® Water Filter Bottle

The **Sport Berkey®** Water Filter Bottle uses the same filtration formulation as our **Black Berkey®** Elements, which are used in our popular gravity-fed systems. Independent third-party test results showed up to a 99.9% reduction for typical contaminants found in water, such as: heavy metals, herbicides, pesticides, pharmaceuticals, organic chemicals, petroleum-based products, unpleasant tastes and more.

We recommend replacing the filter after 640 refills of municipal water. Filter may require replacement sooner based upon the quality of influent water.



### Important! Flush Filter Before Use

Flushing clears excess carbon from the manufacturing process.

1. Pull lid closure down so that straw is exposed.
2. With bottle full of water, squeeze the bottle for 3-4 seconds to flush water through filter and straw.
3. **Repeat until water runs clear.**
4. Bottle is ready to use.

### Using Your Bottle

1. Fill the **Sport Berkey®** Water Filter Bottle with water.
2. Screw on lid and tighten securely to prevent leaks.
3. To drink: pull lid closure down to expose straw. Squeeze bottle to squirt water out of straw into mouth, or suck water through straw, or use both actions together.
4. To close: simply pull lid closure up to conceal straw (this helps prevent drips or leaks while carrying).

The **Sport Berkey®** water filter bottle is covered by the NMCL Limited Warranty: 6 Months. Warranty coverage begins the date product is received.

### Precautions

To prevent leaks, do not store filled bottle on its side or upside down. Do not allow filter to freeze. Do not place bottle or filter in dishwasher or microwave oven. Do not run hot water through filter. Make sure straw is clean before using. If straw is dirty, or if you suspect that the straw is dirty, reclean the straw before use.

**See printed instructions included with your Sport Berkey® Water Filter Bottle for complete set-up, usage, cleaning and filter replacement information.**

## New Millennium Concepts, Ltd. Limited Warranty

New Millennium Concepts, Ltd. warrants their product against defects in materials or workmanship during ordinary consumer use. This Limited Warranty does not cover product issues caused by any other reason, for the time periods and conditions set forth below when purchased directly from an Authorized **Berkey®** Dealer. New Millennium Concepts, Ltd. shall not be held liable for incidental or consequential damage to personal property from, but not limited to, a defective unit, improper use, abuse, accident, or neglect, etc. It is the customer's responsibility to prevent misuse of the system and to replace parts, when, due to the natural course of wear and tear, they must be replaced. To obtain warranty service, you must provide a dated receipt for the product and may be responsible to pay for any shipping charges incurred to return the product to New Millennium Concepts, Ltd. when required. This warranty will not apply to units which have been used for purposes not intended, which have been altered so as, in the manufacturer's judgment, to adversely affect its performance. This warranty is for the original retail purchaser only, and cannot be transferred. For a period not to exceed the specified warranty coverage from the date of receipt of the product by the original purchaser on the original invoice, New Millennium Concepts, Ltd. will, solely at its discretion, replace said product or component that New Millennium Concepts, Ltd. deems is not functioning properly during the stated warranty period. The laws of the state of Texas, USA will govern any disputes regarding this warranty or claim made. This warranty, which is given expressly in lieu of all warranties, expressed or implied, or merchantability and fitness for a particular purpose, constitutes the only warranty made by New Millennium Concepts, Ltd. This warranty applies only to products manufactured or exclusively distributed by New Millennium Concepts, Ltd. and its Authorized **Berkey®** Dealers, and does not apply to extended warranties offered by some Authorized **Berkey®** Dealers. **Berkey® System Housing: Berkey®** System upper and lower chambers including lids, excluding orders for factory-blemished systems, are covered under a one-year warranty. The warranty period begins from the date of receipt of the product by the original purchaser on the original invoice. **Black Berkey® Elements: Black Berkey®** Elements are covered under a two year limited prorated warranty, calculated in six-month intervals. Warranty period begins from the date of receipt of the product by the original purchaser on the original invoice. **Included spigot and accessories that are sold separately** are covered under a six-month warranty. The warranty period begins from the date of receipt of the product by the original purchaser on the original invoice.